

PERMA FILL



1. Empty Contents from PermaFill pail



2. Empty Resin into Pail



3. Empty Bag of dry mix into pail



4. Mix briskly with a paint mixer that is similar to the one in picture at the bottom of this page

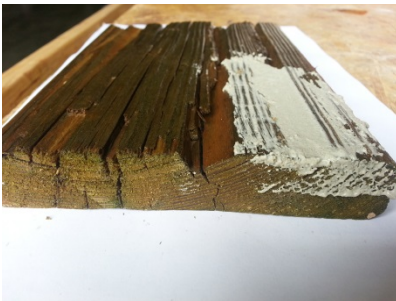


1. Mix for 5 minutes until it is a thick peanut butter consistency



2. Apply with a putty knife

3. Smooth over by applying pressure to the knife at a 45° angle a pull smooth



4. Apply 2 coats of our DeckRevive, DockRevive, or ConcreteRevive product

5. * Always use Permabond to prep surface before using PermaFill

6. * May be used over concrete but Permabond must be applied to prep and crack in concrete

